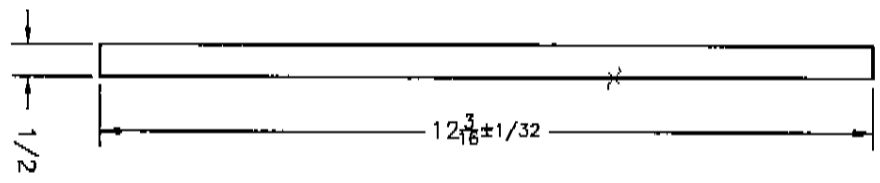


▲ 13/64 (.203) DRILL THRU.
1/4-20 NC TAP THRU.
4 HOLES PER DIM.

13/32 (.406) DRILL THRU.
6 HOLES PER DIM.

3/32 (.094) DRILL 5/16 DEEP
4 HOLES PER DIM.
ON ROUGH SIDE

▲ TURNED BOLT PATTERN 90° & MOVED 1.25" OFF CENTER. DDL 8/14/96



- NOTES:
- SCALE: 1/2" = 1"
 - MAT'L: 1018, 1/2" STEEL PLATE
 - CHAMFER SHARP EDGES 1/32 X 45°
 - USE WITH MURPHY VS-2-EX VIBRATION SWITCH

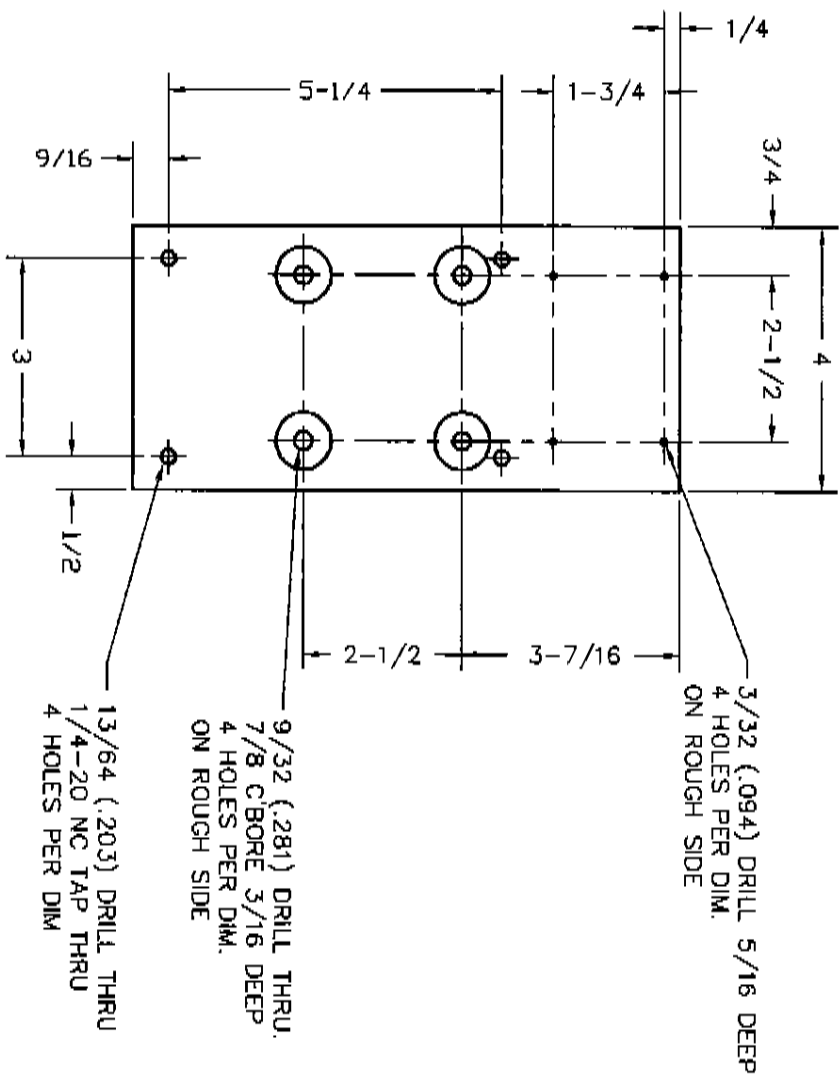
TOLERANCES UNLESS OTHERWISE SPECIFIED	DR. BY: M. GILLIAM
X ±.030	CK. BY: R.A. 7/27/88
XX ±.015	APP. BY:
XXX ±.005	

AMARILLO GEAR COMPANY

INSPECTION MOUNTING PLATE FOR VIBRATION SWITCH

MODEL: 1008 -1713
DATE: 7/27/88
PART NO. P 31051
DWG NO. 31051A

- NOTES:
1. SCALE: 1/2"=1"
 2. MAT'L: 1018, 1/2" STEEL PLATE
 3. CHAMFER SHARP EDGES 1/32 X 45°

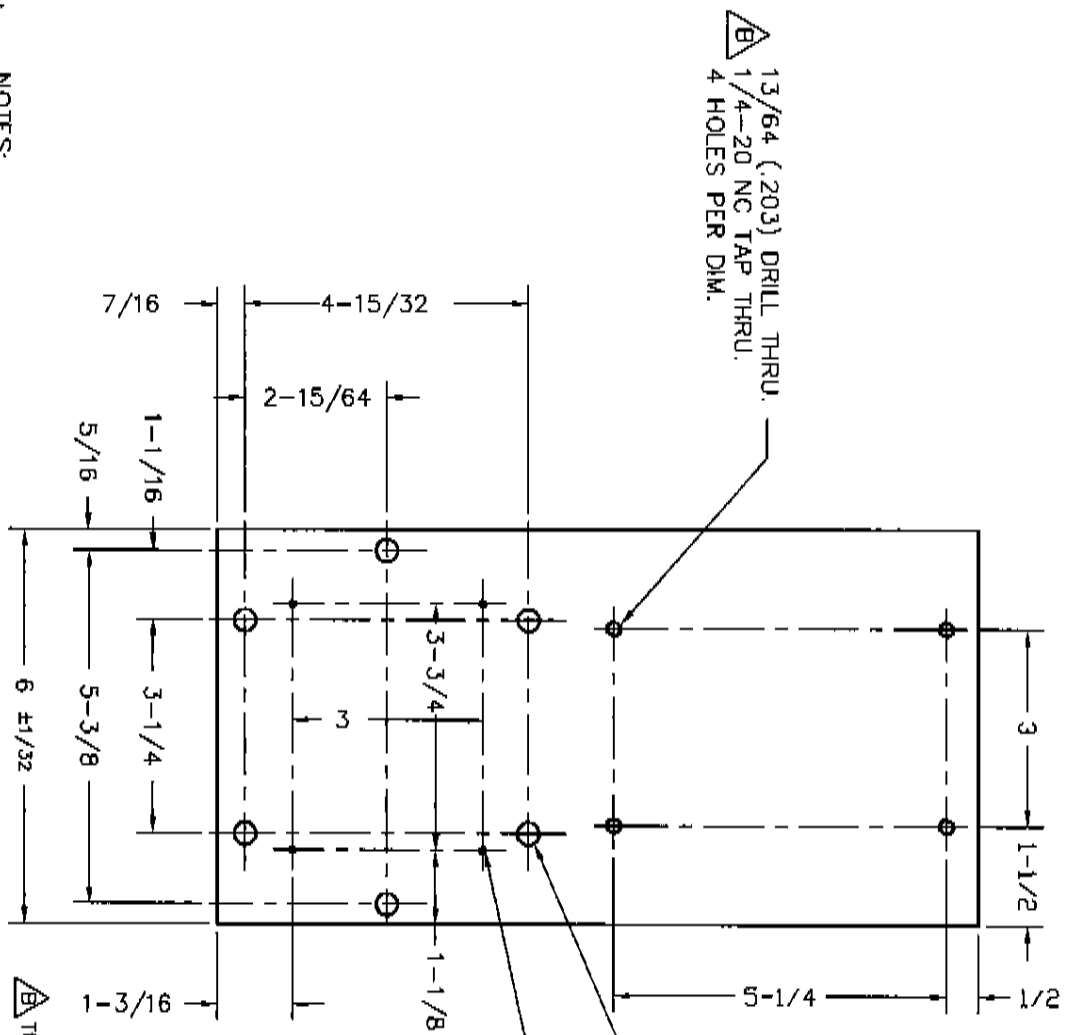


TOLERANCES UNLESS OTHERWISE SPECIFIED	DR. BY: R. ADAMS
.X ±.000	CK. BY:
.XXX ±.003	APP. BY:
ANGLES ±.007	

AMARILLO GEAR COMPANY

INSPECTION MOUNTING PLATE FOR MURPHY VS-2-EX SWITCH

MODEL: 65A
DATE: 1/7/97
PART NO. P 21075
DWG NO. 21075A

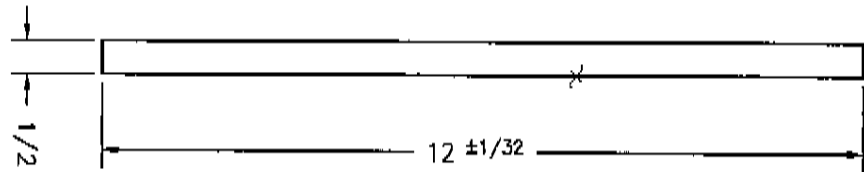


B 13/64 (.203) DRILL THRU.
1/4-20 NC TAP THRU.
4 HOLES PER DIM.

11/32 (.344) DRILL THRU.
6 HOLES PER DIM.

3/32 (.094) DRILL 5/16 DEEP
4 HOLES PER DIM.
ON ROUGH SIDE

B TURNED BOLT PATTERN 90° BECAUSE OF MURPHY DESIGN CHANGE. RA 3/20/96



- NOTES:
1. SCALE: 1/2"=1"
 2. MATL: 1018, 1/2" STEEL PLATE
 3. CHAMFER SHARP EDGES 1/32 X 45°

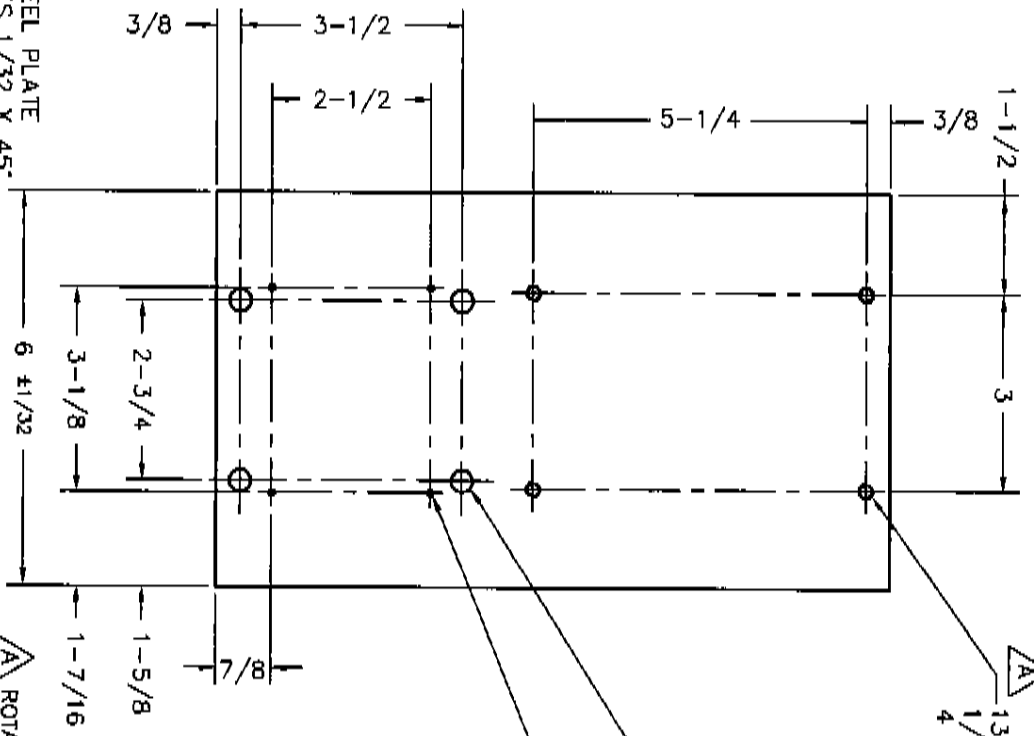
DR.BY: R. ADAMS
CK.BY:
APP.BY:

**AMARILLO
GEAR
COMPANY**

INSPECTION MOUNTING
PLATE FOR MURPHY
VS-2-EX SWITCH

MODEL: 110 - 175
DATE: 3/20/96
PART NO. P 23078
DWG NO. 23078 B

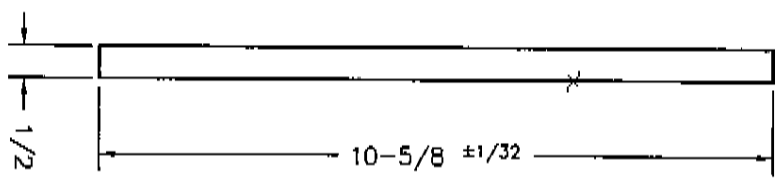
- NOTES:
1. SCALE: 1/2"=1"
 2. MAT'L: 1018, 1/2" STEEL PLATE
 3. CHAMFER SHARP EDGES 1/32 X 45°
 4. 110-175 ROUGH MAT'L



A
 13/64 (.203) DRILL THRU.
 1/4-20 NC TAP THRU.
 4 HOLES PER DIM.

11/32 (.344) DRILL THRU.
 4 HOLES PER DIM.

3/32 (.094) DRILL 5/16 DEEP
 4 HOLES PER DIM.
 ON ROUGH SIDE



A ROTATED BOLT PATTERN 90° BECAUSE OF MURPHY DESIGN CHANGE. RA 4/22/96

TOLERANCES UNLESS OTHERWISE SPECIFIED		DR. BY: R. ADAMS
X ±.030	XX ±.015	CK. BY: MHG 8/12/88
XXX ±.008	ANGLES ±.50°	APP. BY:

AMARILLO GEAR COMPANY

INSPECTION MOUNTING PLATE FOR MURPHY VS-2-EX SWITCH

MODEL: BS
DATE: 8/12/88
PART NO. P 22144
DWG NO. 22144A